

# earthborn®

All you need to know about...

## Silicate Primer

A highly breathable primer for use with Earthborn Silicate Masonry Paint. It can also be used to stabilise any mineral surface that is very absorbent or powdery.

### Why choose Silicate Primer?

- **Perfect partner** for Earthborn Silicate Masonry Paint
- **High breathability** – with an SD value of less than 0.002m
- **Weather resistant** – Built to last and easy to clean
- **Stabilise** any absorbent or powdery mineral surface
- **Trace VOC** – virtually no nasties, so it's kinder to your home and the planet

### Where to use it

A base coat primer for use with Earthborn Silicate Masonry Paint. Perfect for unpainted, porous mineral surfaces like:

- Lime render
- Concrete
- Sand-lime and burnt clay brick
- Pebbledash
- Stone
- Cement render

When used with Earthborn Silicate Masonry Paint, it creates a highly breathable, permanent chemical bond, becoming part of the mineral surface itself.

It can also be used to stabilise any mineral surface that is very absorbent or powdery.

Not suitable for: engineered brick, synthetic resin renders, acrylic plasters, oil based or latex paints, plastic, wood, metal and glass. Surfaces treated to repel water are unsuitable, as their water-resistant properties prevent proper paint penetration and bonding. Also, avoid applying to areas affected by rising damp or salt deposits; these issues should be treated first to ensure proper adhesion.

### Before you start

Make sure all surfaces are in good condition, clean, dry, and free from dust, grease, or salts. Remove any limewash, distemper, or any other water soluble coatings.

**New lime plaster?** Give it plenty of time to cure – about 1 month of drying for every 5mm thickness. A 25mm coat, for example, needs at least 5 months.



### Key Facts

#### Coverage:

Approx. 5m<sup>2</sup> per litre

#### Drying Time:

Touch dry around 1 hour.  
Recoat and before applying  
Silicate Masonry Paint: 12 hours.  
Based on standard conditions (20°C,  
65% relative humidity). Temperature  
and humidity may affect drying time.

#### Colour:

Transparent

#### Pack Sizes:

100ml, 2.5L, 5L

#### Thinner:

Water

# earthborn®

All you need to know about...

## Silicate Primer

### How to apply

- Give it a good stir before starting
- Apply thin, even coats and keep a wet edge
- Finish full walls or sections in one go
- Use a flat brush or roller for best results

**Just so you know**, Silicate Primer is not suitable for use in a spray gun.

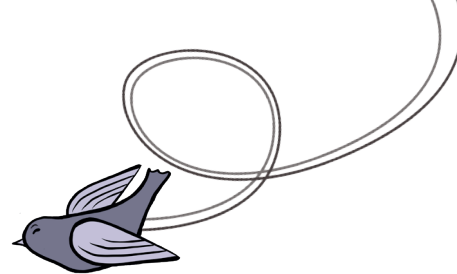
### A few important notes:

- Only paint when the temperature is above 8°C, and avoid direct sunlight, rain or cold weather for at least 24 hours after
- Make sure the walls are dry (moisture content under 15%) and fix any damp issues first to prevent future problems
- Mask off adjacent glass or metal surfaces to prevent etching from splashes

### Safety first

This primer is classified as non hazardous; but it contains alkali so certain precautions should be taken. Do not get in eyes, on skin, or on clothing. IF IN EYES: rinse cautiously with water for several minutes. Remove contact lenses if present and easy to do so. Continue rinsing. IF ON SKIN: wash with plenty of soap and water. May produce an allergic reaction. Warning: Hazardous respirable droplets may be formed when sprayed. Do not breathe spray or mist. Keep containers sealed and always keep the product out of reach of children.

For full details, see the Material Safety Data Sheet



### Breathability and VOC's

**Moisture Vapour Diffusion (V):**  
8321.7g/m<sup>2</sup> /24

**Water Vapour Resistance (Sd-Value):**  
0.002m (excellent breathability)

**Vapour Permeability Class:**  
Class 1 (Highly vapour permeable)

**VOC Content:**  
Less than 0.1% (trace only)

### Storage and disposal

- Store the primer in a cool, frost free place with the lid tightly shut
- Don't pour unused primer down the drain or into watercourses. Let it dry out and follow local disposal rules
- Recycle empty tins where possible

### What's inside?

Water, Binder (Stabilised Potassium Silicate), Dispersing agent (Acrylic polymer stabiliser), Defoamer (vegetable oil-based).

### Need more help?

We're always happy to offer friendly advice. If you're unsure which primers or paints you need, or you're working on a listed or sensitive building, just get in touch with our team [enquiries@earthbornpaints.co.uk](mailto:enquiries@earthbornpaints.co.uk) / 01928 734 171 or visit [earthbornpaints.co.uk](http://earthbornpaints.co.uk).