

Claypaint on track for Norfolk eco home

Products - Claypaint

Project - Oak framed new build, Norfolk

earthborn®

A former station master's house on the Bittern Line in Norfolk has been rebuilt using a range of eco measures to make it both economical and environmentally friendly.



Bought by retired surveyor Chris Dady and his wife Sally, the Salhouse station master's house was very dilapidated and they opted to demolish and rebuild rather than restore. They pledged to make it a very sustainable project by reusing as many materials from the original building as possible together with a careful selection of eco friendly building products.

Chris acted as project manager and he and Sally did a lot of the work themselves, using local tradespeople as necessary. Chris's specification included high levels of sheep's wool insulation, photovoltaic panels, an air source heat pump and rainwater flush loos. The structure is oak framed with structural insulated panel walls, oak windows and doors.

All interior walls as well as the pine skirtings and architraves have been painted with Earthborn Claypaint. Chris discovered Claypaint through research at shows and property visits organised by the Campaign to Protect Rural England's Green Buildings scheme.

Chris said: "We were impressed by the look of Claypaint as well as its eco friendly properties. When it came to using it ourselves, the coverage was great, too.

"On the walls we used two coats, both 50% diluted with water, and were able to apply it as soon as the plaster had become 'pink'. On the pine woodwork we treated

Claypaint on track for Norfolk eco home

the knots then applied two coats of Claypaint, the first diluted by 50%.”

Claypaint is a unique clay based emulsion that covers exceptionally well, leaving you with a distinctive, ultra matt finish. Its advanced technology maximises the natural properties of clay to create a high performance, highly breathable paint. As it also carries the EU Ecolabel, you are reassured that you are using a certified environmentally friendly paint.

Being free of all harmful emissions and VOCs, Claypaint is safer for the health of building occupants as well as the environment.

Chris added: “Following our experience with Claypaint I cannot imagine ever using another paint. It is a beautiful, thick paint that is easy to apply, has great colours and gives unbelievable coverage. Being water

based, it is easy to rinse out brushes and rollers after use. There is no smell from it either, which makes it more pleasant to use than standard paints.

“As a customer paying retail prices, bearing in mind the coverage, I think the cost was comparable to brand emulsions. The paint has stood up really well to knocks and still looks good after three years.”

Earthborn Claypaint is available in 60 standard shades. Bespoke colours can be developed through the nationwide network of Earthborn stockists such as Paint & Paper of Hellesdon, which supplied this project.

For further information visit:
www.earthbornpaints.co.uk/trade
www.paint-paper.co.uk

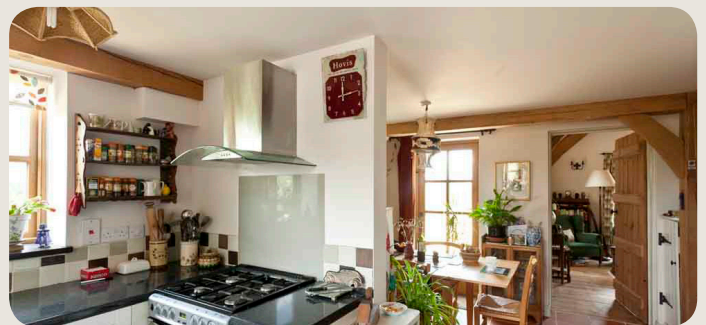
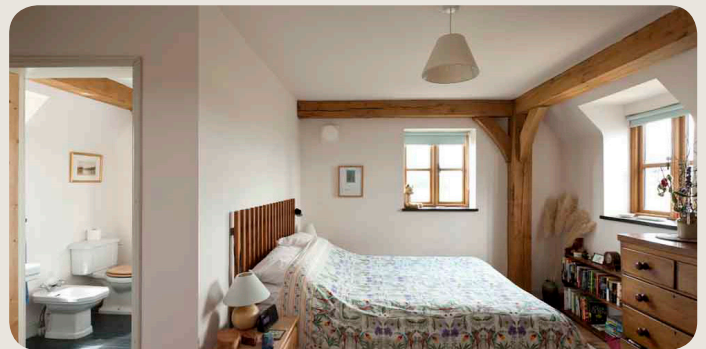


Front page - Inspired by the arts and crafts style, the interior features exposed oak timbers. These are complemented by the warm Piglet shade of Claypaint on all walls and ceilings.

This page (top left) - Chris and Sally's four bedroomed home is built alongside Norfolk's Bittern Line.

This page (bottom left) - Pine skirtings and architraves feature the Cupboard Love shade.

This page (below) - Bedroom and kitchen. Three years on, Chris says Claypaint has stood up really well to knocks.



Friend us and/or follow us on Facebook at www.facebook.com/earthbornpaints

Get in touch to find out more about Earthborn and we'll turn somersaults to supply whatever you need.

Earthborn
info@earthbornpaints.co.uk
www.earthbornpaints.co.uk